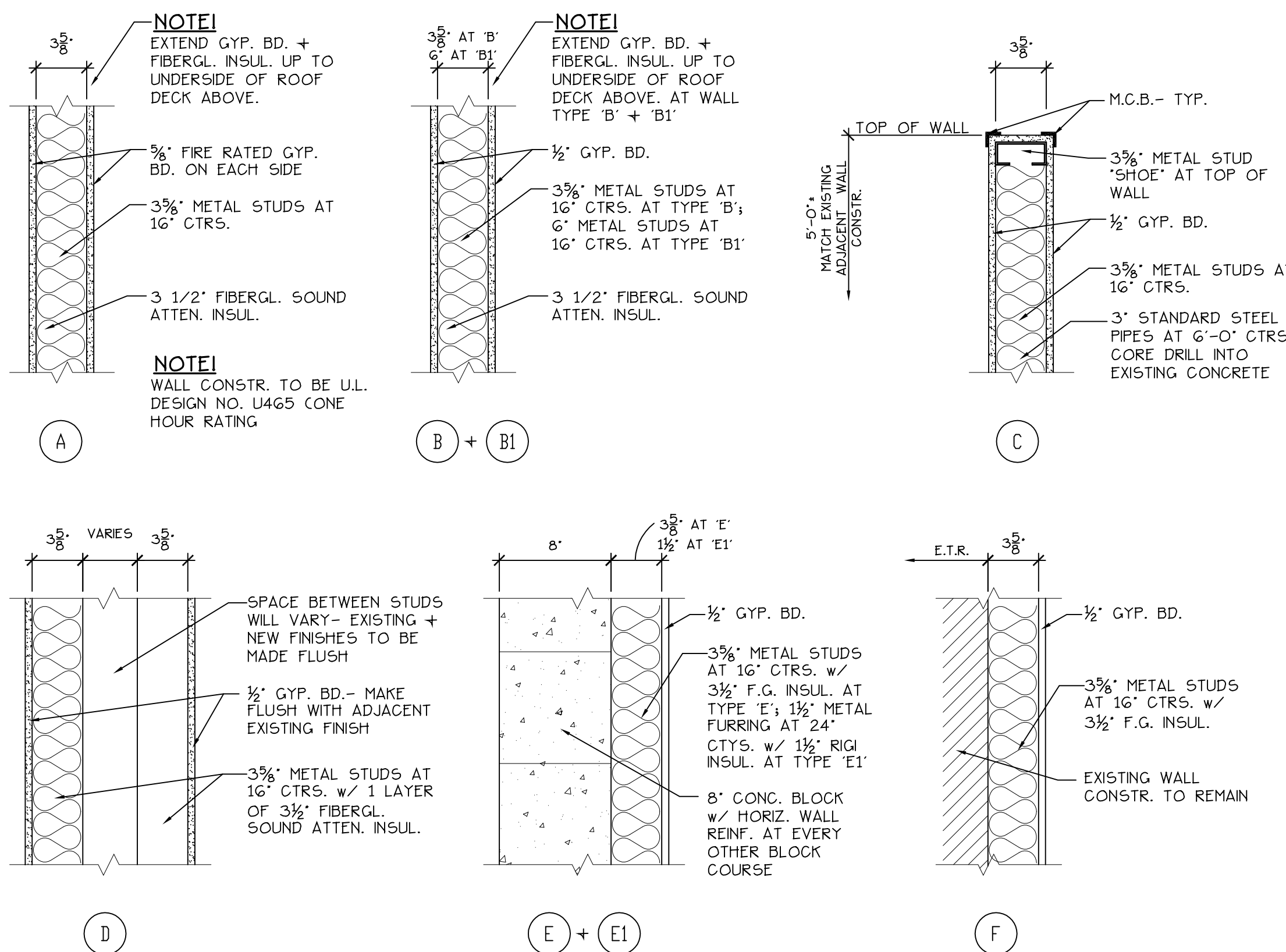


DOOR TYPES  
SCALE: 1/4" = 1'-0"

DOOR SCHEDULE						
NO.	TYPE	MAT'L	SIZE	JAMB TYPE	THOLD	REMARKS
EXISTING DOOR + HARDWARE TO REMAIN						
EXISTING DOOR, HARDWARE + JAMB TO BE REMOVED						
1	A	SOLID CORE FLUSH WOOD	3'-0"x7'-0"x1-3/4"	1	METAL PAINT	LOOK SET
2	A	SOLID CORE FLUSH WOOD	3'-0"x7'-0"x1-3/4"	1, 2, 3	METAL PAINT	LOOK SET
3	A	SOLID CORE FLUSH WOOD	3'-0"x7'-0"x1-3/4"	1	METAL PAINT	LOOK SET
4	A	SOLID CORE FLUSH WOOD	3'-0"x7'-0"x1-3/4"	1	METAL PAINT	LOOK SET
5	A	SOLID CORE FLUSH WOOD	3'-0"x7'-0"x1-3/4"	1	METAL PAINT	PASSAGE SET, CLOSER, 20 MN. ASSEMBLY
6	A	SOLID CORE FLUSH WOOD	3'-0"x7'-0"x1-3/4"	1	METAL PAINT	LOOK SET, CLOSER, 20 MN. ASSEMBLY
7	A	SOLID CORE FLUSH WOOD	3'-0"x7'-0"x1-3/4"	1	METAL PAINT	LOOK SET, CLOSER, 20 MN. ASSEMBLY
8	A	SOLID CORE FLUSH WOOD	3'-0"x7'-0"x1-3/4"	1	METAL PAINT	PASSAGE SET, CLOSER, 20 MN. ASSEMBLY
9	A	SOLID CORE FLUSH WOOD	3'-0"x7'-0"x1-3/4"	1	METAL PAINT	LOOK SET, CLOSER, 20 MN. ASSEMBLY
10	A	SOLID CORE FLUSH WOOD	3'-0"x7'-0"x1-3/4"	1	METAL PAINT	PASSAGE SET, CLOSER, 20 MN. ASSEMBLY
11	A	SOLID CORE FLUSH WOOD	3'-0"x7'-0"x1-3/4"	1, 2, 3	METAL PAINT	LOOK SET
12	A	SOLID CORE FLUSH WOOD	3'-0"x7'-0"x1-3/4"	1, 2, 3	METAL PAINT	LOOK SET
13	A	SOLID CORE FLUSH WOOD	3'-0"x7'-0"x1-3/4"	1, 2, 3	METAL PAINT	LOOK SET
14	B	ALUM. + TEMP. INSUL. GLASS	3'-0"x7'-0"x1-3/4"	4	ALUM.	ALUM. GLOSER, PANG. HWARE w/ CYLINDER LOCK, WEATHER STRIPPING PUSH PULL
15	A	SOLID CORE FLUSH WOOD	3'-0"x7'-0"x1-3/4"	1, 2, 3	METAL PAINT	PUSH/PULL; CLOSER
16	A	SOLID CORE FLUSH WOOD	3'-0"x7'-0"x1-3/4"	1	METAL PAINT	PASSAGE SET
17	A	SOLID CORE FLUSH WOOD	3'-0"x7'-0"x1-3/4"	1, 2, 3	METAL PAINT	LOOK SET
18	A	SOLID CORE FLUSH WOOD	3'-0"x7'-0"x1-3/4"	1	METAL PAINT	PASSAGE SET, CLOSER, 20 MN. ASSEMBLY
19	A	SOLID CORE FLUSH WOOD	3'-0"x7'-0"x1-3/4"	1	METAL PAINT	PASSAGE SET, CLOSER, 20 MN. ASSEMBLY
20	A	SOLID CORE FLUSH WOOD	3'-0"x7'-0"x1-3/4"	1	METAL PAINT	PASSAGE SET, CLOSER, 20 MN. ASSEMBLY
21	A	SOLID CORE FLUSH WOOD	3'-0"x7'-0"x1-3/4"	1	METAL PAINT	PASSAGE SET, CLOSER, 20 MN. ASSEMBLY
22	A	SOLID CORE FLUSH WOOD	3'-0"x7'-0"x1-3/4"	1, 2, 3	METAL PAINT	LOOK SET
23	A	SOLID CORE FLUSH WOOD	3'-0"x7'-0"x1-3/4"	1, 2, 3	METAL PAINT	LOOK SET
24	A	SOLID CORE FLUSH WOOD	3'-0"x7'-0"x1-3/4"	6	METAL PAINT	PANG. HWARE, CLOSER, 20 MN. ASSEMBLY
25	A	SOLID CORE FLUSH WOOD	3'-0"x7'-0"x1-3/4"	1	METAL PAINT	PASSAGE SET, CLOSER, 20 MN. ASSEMBLY
26	A	SOLID CORE FLUSH WOOD	3'-0"x7'-0"x1-3/4"	1	METAL PAINT	LOOK SET, CLOSER, 20 MN. ASSEMBLY
27	A	SOLID CORE FLUSH WOOD	3'-0"x7'-0"x1-3/4"	1	METAL PAINT	LOOK SET, CLOSER, 20 MN. ASSEMBLY
28	B	ALUM. + TEMP. INSUL. GLASS	3'-0"x7'-0"x1-3/4"	5	ALUM.	GLOSER, PANG. HWARE w/ LOCK SET, WEATHER STRIPPING
29	B	ALUM. + TEMP. INSUL. GLASS	3'-0"x7'-0"x1-3/4"	5	ALUM.	GLOSER, PANG. HWARE w/ LOCK SET, WEATHER STRIPPING
30	C	SOLID CORE FLUSH WOOD	2'-0"x6'-0"x1-3/4"	1	METAL PAINT	FLUSH BOLT ON THE INACTIVE LEAF

NOTES:  
1. ALL DOOR SHALL RECEIVE STOPS, EITHER FLOOR OR WALL TYPE.  
2. ALL PUSH PLATES SHALL BE MOUNTED AT A HEIGHT NO HIGHER THAN 48" ABOVE FINISHED FLOOR.  
3. ALL DOOR CLOSERS AND DOOR HARDWARE SHALL MEET STATE AND NATIONAL AMERICANS WITH DISABILITIES ACT REQUIREMENTS.



WALL TYPES  
SCALE: 1 1/2" = 1'-0"

CODE ANALYSIS

APPLICABLE CODES:  
INTERNATIONAL BUILDING CODE 2006  
ICC ELECTRICAL CODE 2006  
INTERNATIONAL ENERGY CONSERVATION CODE 2006  
INTERNATIONAL FIRE CODE 2006  
INTERNATIONAL FUEL GAS CODE 2006  
INTERNATIONAL MECHANICAL CODE 2006  
INTERNATIONAL PLUMBING CODE 2006  
ICC/ANSI A117.1-2003  
INTERNATIONAL EXISTING BUILDING CODE 2006

CIVIL RIGHTS LAW:  
AMERICAN WITH DISABILITIES ACT OF 1990

USE / OCCUPANCY CLASSIFICATION:  
"B" BUSINESS OFFICE SPACE- SECTION 304- AREA OF THIS APPROVAL

TYPE OF CONSTRUCTION:  
TABLE G01 3B TABLE 503  
TABLE G02 2 HOUR RATED EXTERIOR WALLS REQUIRED + PROVIDED (TABLE 720.1 (2) ITEM #3)

GENERAL BUILDING HEIGHTS AND AREAS:  
TABLE 503 55 FEET / 4 STORY / 19,000 S.F. USING "B" USE GROUP

FRONTAGE INCREASE:  
682 x 19,000 = 12,920 S.F.

MODIFIED ALLOWABLE AREA:  
31,920 S.F.

ACTUAL AREA, HEIGHT + STORY:  
OVERALL BUILDING = 20,925 SQUARE FEET, ONE STORY, 20'-0" MAX. HT.  
AREA OF THIS APPROVAL = 10,917 SQUARE FEET, ONE STORY, 20'-0" MAX. HT.

MEANS OF EGRESS:  
FOR AREA OF THIS APPROVAL ONLY

OCCUPANT LOAD (TABLE 1004.1.3)  
AREA LOAD TOTAL OCCUPANTS  
BUSINESS 10,917 S.F. 100 GROSS 110

NUMBER OF EXITS:  
FOR AREA OF THIS APPROVAL ONLY  
2 EXITS REQUIRED

TRAVEL DISTANCE:  
FOR AREA OF THIS APPROVAL ONLY  
PER TABLE 1016.1 - "B" OCCUPANCY WITHOUT SPRINKLER SYSTEM=200 FEET

ACCESSIBILITY:  
FOR AREA OF THIS APPROVAL ONLY  
ALL AREAS ACCESSIBLE THROUGHOUT AREA OF THIS APPROVAL

PLUMBING FIXTURE REQUIREMENTS:  
FOR AREA OF THIS APPROVAL ONLY

PER IPC 2006, TABLE 403.1 - USE GROUP "B"  
PER IPC 403.2 SEPARATE FACILITIES REQUIRED FOR EACH SEX  
PER IPC 403.3, 110 OCCUPANTS = 55 MALE / 55 FEMALE

GENDER WATER CLOSETS LAVATORIES  
MALE 3 REQ'D + PROVIDED 2 REQ'D + PROVIDED  
FEMALE 3 REQ'D + PROVIDED 2 REQ'D + PROVIDED

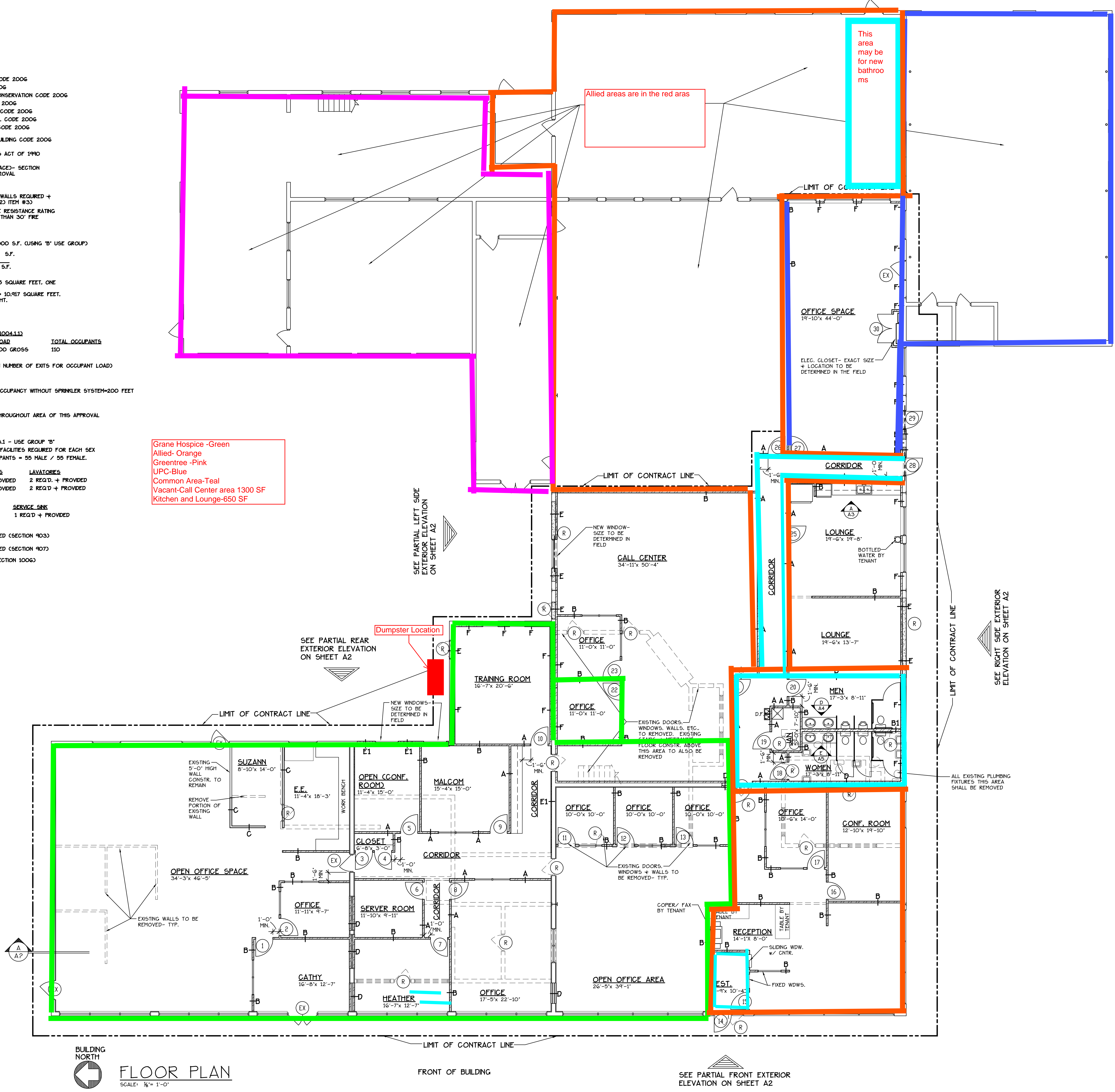
DINING FOUNTAINS SERVICE SINK  
2 REQ'D + PROVIDED 1 REQ'D + PROVIDED

BLDG. SPRINKLER:  
NOT REQUIRED OR PROVIDED (SECTION 903)

FIRE ALARM + DETECTION:  
NOT REQUIRED OR PROVIDED (SECTION 907)

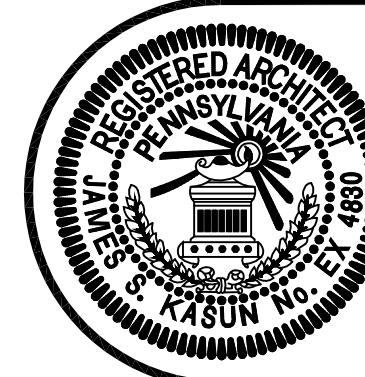
MEANS OF EGRESS ILLUMINATION:  
REQUIRED + PROVIDED (SECTION 1006)

Grane Hospice - Green  
Allied - Orange  
Greentree - Pink  
UPC-Blue  
Common Area-Teal  
Vacant-Call Center area 1300 SF  
Kitchen and Lounge-650 SF



BUILDING NORTH  
FLOOR PLAN  
SCALE: 1/8" = 1'-0"

**KASUN ARCHITECTS INC.**  
412 ALLEGHENY STREET HOLLIDAYSBURG, PENNSYLVANIA 16648-2026  
(814 695-3216 FAX 814 695-4645)



NEW OFFICE BUILDING FOR  
**DCA UNION AVENUE LLC**  
115 UNION AVENUE  
ALTOONA, PENNSYLVANIA 16602

date	sheet no.
4-7-08	A-1
job no.	
6438	